

FIBRO NÁTUR™ THERMO

Fibro Natur Thermo is a fiberboard designed for thermal and acoustic insulation of buildings. Due to the excellent performance of thermal insulation it is an ideal material for insulation of walls and roofs of buildings. Fibro Natur Thermo board provides excellent protection against heat in summer and heat loss in winter. Due to the use of natural components, the board regulates the microclimate in isolated rooms and provides a high comfort. The offered formats and ease of machining make the board ideal for both, new insulations and refurbished buildings.

- excellent thermal insulation
- excellent sound insulation
- easy and simple installation
- natural constituents
- high comfort of use of insulated rooms

The quality of the produced board is monitored by factory production control. Type tests are performed in cooperation with MFPA LEIPZIG.

STANDARDS:

Produced according to PN-EN 13171

MARKING:

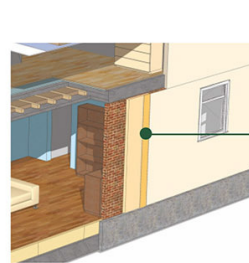
WF-EN 13171 – T4 – DS. (70,-)2 – CS (10/Y) 40 – TR 2,5 – WS 2,0 – MU 5 – AFR 100

STANDARD DIMENSIONS:

1220/1200 x 600/ 800/ 2440/ 2500 mm

OFFERED THICKNESSES:

20,0; 40,0; 60,0; 80,0; 100,0; 120,0 mm



Fibro Natur THERMO
It checks for wall
insulation.



Physico-mechanical properties of boards

Parameter:	Value for thickness [mm]:					
	20,0	40,0	60,0	80,0	100,0	120,0
Density [kg/m ³]	170 ± 20					
Declared thermal conductivity λD [W/mK]	0,0400					
Determined thermal conductivity λmean [W/mK]	0,0391	0,0385	0,0387	0,0389	0,0389	0,0389
Declared thermal resistance RD [m ² K/W]	0,4878	0,9756	1,4286	1,9048	2,3809	2,8571
Determined thermal resistance Rmean [m ² K/W]	0,5115	1,0389	1,5504	2,0566	2,5707	3,0848
Steam diffusion resistance factor μ	Dry conditions = 10 Wet conditions = 5					
Specific heat capacity c [J/kg x K]	2100					
Absorbability at short-period water immersion according to PN-EN 1609 [kg/m ²]	≤ 2,0					
Compression strength [kPa]	> 40					
Airflow resistance [kPa · s / m ³]	> 100					
Reaction to fire according to PN-EN 13 501-1	E					
Sound absorption coefficient: frequency of 250 – 500 Hz / 1000 – 2000 Hz	0,10/ 0,30					
Thickness tolerance:	- 1,0; + 3,0					
Tolerance of length / width / squareness / flatness[mm]:	± 2,0/ ± 1,0/ ± 5,0/ < 6,0					
Hygiene class - the emission of formaldehyde	class E1					

Logistics information – packing method

No	Thickness [mm]	Width [mm]	Length [mm]	Pieces / pallet	m ² / pallet	pallet / semi-trailer	Pieces / semi-trailer	m ² / semi-trailer	m ³ / semi-trailer
1	20,0	600	1200	116	83,52	44	5104	3674,88	73,50
2	40,0	600	1200	56	40,32	44	2464	1774,08	70,96
3	60,0	600	1200	38	27,36	44	1672	1203,84	72,23
4	80,0	600	1200	28	20,16	44	1232	887,04	70,96
5	100,0	600	1200	22	15,84	44	968	696,96	69,69
6	120,0	600	1200	20	14,40	44	880	633,60	76,03
7	20,0	800	1200	58	55,68	66	3828	3674,88	73,50
8	40,0	800	1200	28	26,88	66	1848	1774,08	70,96
9	60,0	800	1200	19	18,24	66	1254	1203,84	72,23
10	80,0	800	1200	14	13,44	66	924	887,04	70,96
11	100,0	800	1200	11	10,56	66	726	696,96	69,69
12	120,0	800	1200	10	9,60	66	660	633,60	76,03



Search for certified FSC products in our offer

